

Pelham School Age Child Care

Where a Child can find a home away from home!

61 Marsh Road
Pelham, NH
603-635-9733

www.psacc-nh.org



Celebrating
22 Years
in the Pelham
Community

January 2012 Newsletter

January Dates to Remember

1/03: First day to sign up for the Teacher Workshop Day on 1/23

1/17: Last day to complete sign up for Teacher Workshop Day on 1/23

1/16: P.S.A.C.C. closed in observance of Martin Luther King Jr. Day

1/23: P.S.A.C.C. opens from 6:30 am - 6:00 pm for Teacher Workshop Day

Mark Your Calendars

3/5 - 3/16: Summer Registration

4/9- 4/20: Fall Registration

5/7- 5/18: Summer Confirmation

Dressing for the Weather

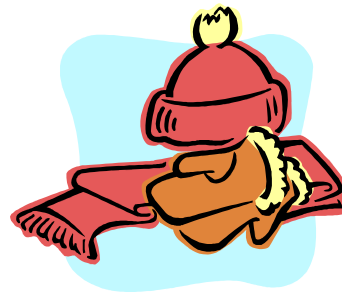
At this time of the year we would like to remind all parents to make sure their children are dressed appropriately for the weather. The children will be going outside each afternoon unless there is rain in the forecast or it is too cold. If we have snow the children will need boots, gloves, a hat and snow pants to play in the snow. All children must wear a winter jacket to go outside.

We encourage you to make sure all items are clearly labeled and that your child has room in their backpack or an additional bag to hold them. **Please note that P.S.A.C.C. is not responsible for lost items, as stated in the P.S.A.C.C. Parent Handbook.**

Visit Us Online

Don't forget to check out P.S.A.C.C.'s website at www.psacc-nh.org

There you'll find newsletters, snack calendars and other helpful information about the program.



Pelham School Age Child Care

Where a Child can find a home away from home!

61 Marsh Road
Pelham, NH
603-635-9733

www.psacc-nh.org



Celebrating
22 Years
in the Pelham
Community

January 2012 Newsletter

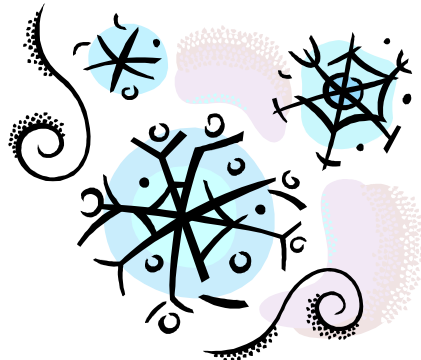
Delays or Closures Due to Inclement Weather

As stated in the parent handbook if school closes due to inclement weather the program will not operate. If school is delayed, the opening of the program will be delayed by the same amount of time that the opening of school is delayed. (Example: if school is delayed 90 minutes, instead of opening at 6:30am, we will open at 8:00am).

If school is released early due to inclement weather or other emergencies, **the program will not operate.** Tuition for the time the program is closed will be credited to your account.

If school is not in session (ex. school vacations) and it becomes necessary to close the program due to inclement weather or other emergencies, announcements will be made on WMUR-TV (Channel 9).

If it becomes necessary to close the program after it is already in session due to inclement weather or other emergencies, parents will be notified individually by members of the staff. Please make provisions for your child during these closure times.



Looking for Volunteers!

P.S.A.C.C. is currently accepting applications from parents and members of the community to serve on our Board of Directors. If you're interested in completing an application or would like more information, please speak with Miss Kathleen.